

# Using TI Connect in the IPFW Student Access Labs

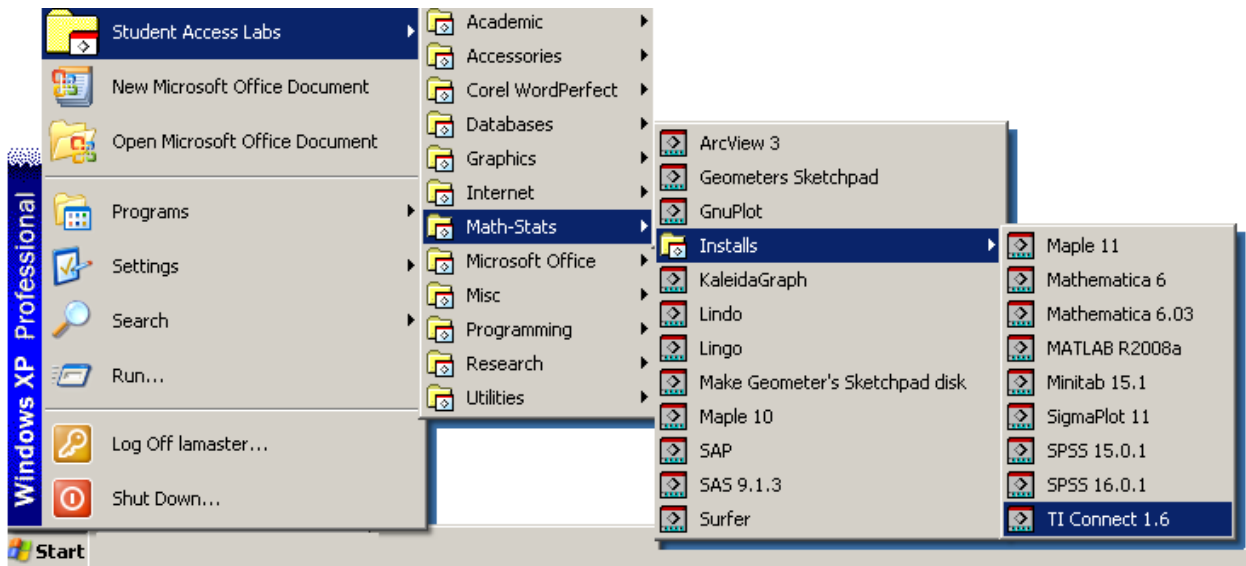
## 1. Log in to a computer in the open-access labs.

Once you first log in, you may need to wait until you see **Student Access Labs** in the Start menu.

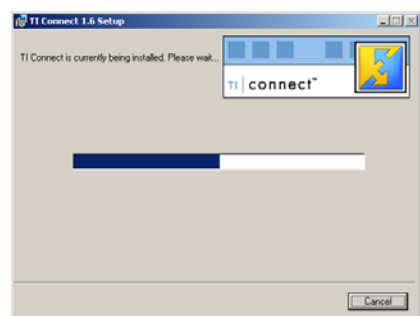
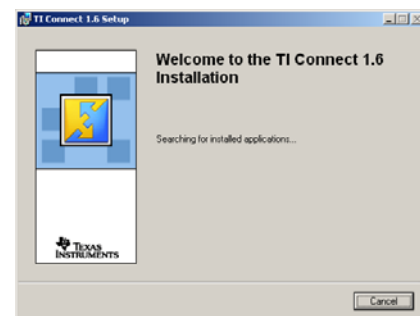
## 2. If you see the TI Connect Icon on the desktop, click on it. If not, you need to install it first.



## 3. From the START menu, go to Student Access Labs>Math-Stats>Installs>TI Connect 1.6



## 4. It will appear as nothing is happening. Then you will see the pop-ups to the right. Just wait. *Don't* click on cancel.

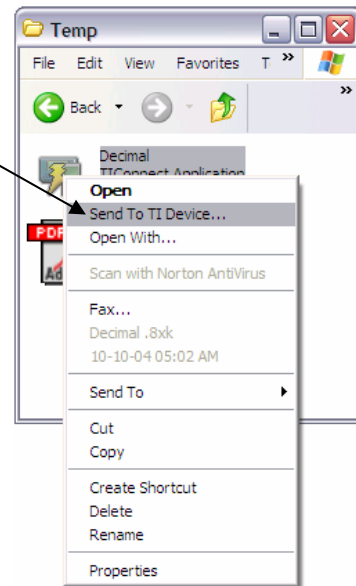


## 5. When all is done, you should see the TI Connect icon on the desktop. Click on the icon to use TI-Connect.



## Shortcuts For Sending to The Handheld

- Any file you wish to send from the computer to a connected handheld can be sent as described above. However, there are other ways that work as well.
  - Right click on the **decimal.8xk** icon.  
Select **Send To TI Device...**
  - Select the file and click on Send to Device.  
This will send the application to the handheld without opening TI Connect.

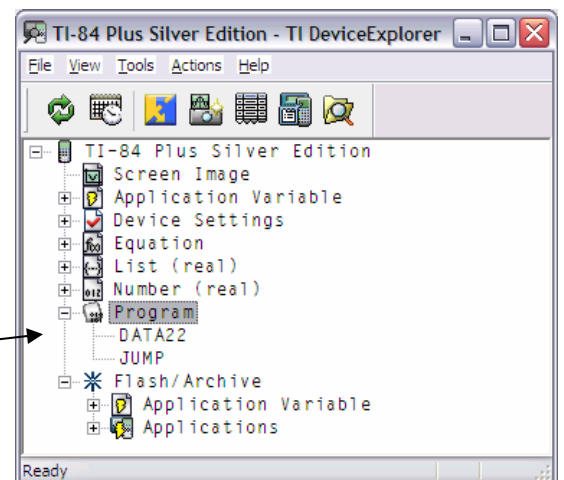


- Another method for transferring an application without opening TI Connect would be to simply drag the icon for Decimal Defender on top of the icon for TI-Connect. This process will begin the transfer as well.

- It is always a good idea to keep your batteries fresh.
  - Some files will not transfer to a handheld with low batteries.

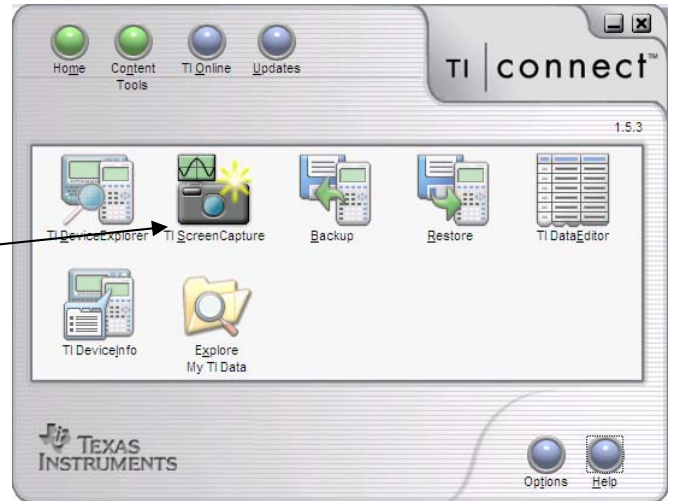
## Transferring From Handheld to Computer


- To upload files from the handheld to the computer, use the TI Device Explorer.
  - This is an outline view of the contents of the connected handheld.  
Click on a to expand selections.  
Click on to collapse
- Suppose we have two programs on our handheld and we want to save them to the computer.
  - Click on the **Program** to see the selections.
- Use your mouse to highlight them and drag them to the desired folder on your computer. (To select multiple files, hold the CTRL key down as you click on them.)

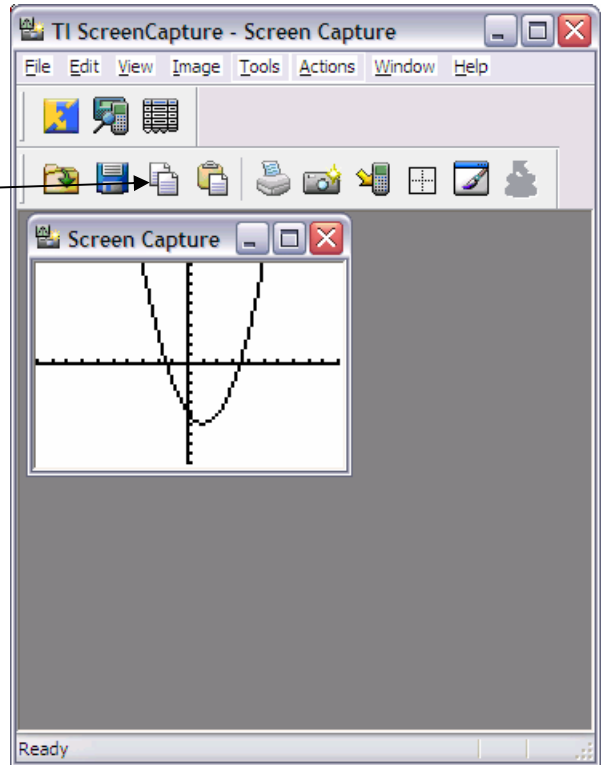


## Taking a Screen Capture

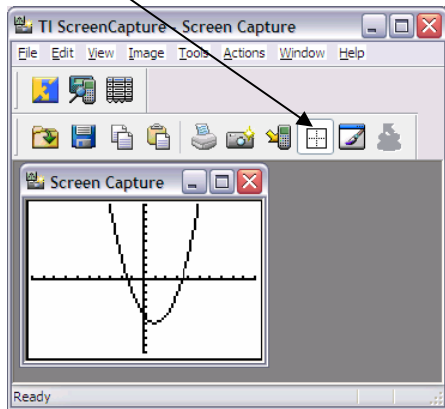
1. To do this activity, you will need to have something on the screen of your handheld you want to capture.
2. Make sure TI Connect is running and your handheld is connected to your computer.
3. Click the TI Screen Capture



- This will pop up the screen capture window.
  - Use the Copy Button  (or CTRL C) to put the picture on your computer's clipboard.
4. Open a word processor document on your computer and use Edit - Paste (CTRL V) to insert it into your document.



- Use  to Add/Remove the Border.



Click on Get Screen  to capture additional screen

