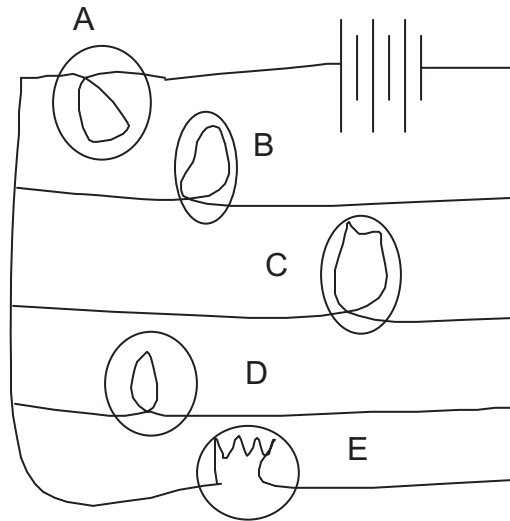


NAME _____

DATE _____

Physics 251 Pre-Laboratory 7

Given below is a diagram of a circuit containing five light bulbs.



The sequence of how bright the bulbs are goes from A, which is the brightest, to D, then E, then B and finally C is the dimmest.

- 1) Rank the bulbs, from greatest to least, on the basis of their resistances. Explain fully.
- 2) Rank the bulbs, from greatest to least, on the basis of their currents. Explain fully.
- 3) Rank the bulbs, from greatest to least, on the basis of their potential differences. Explain fully.